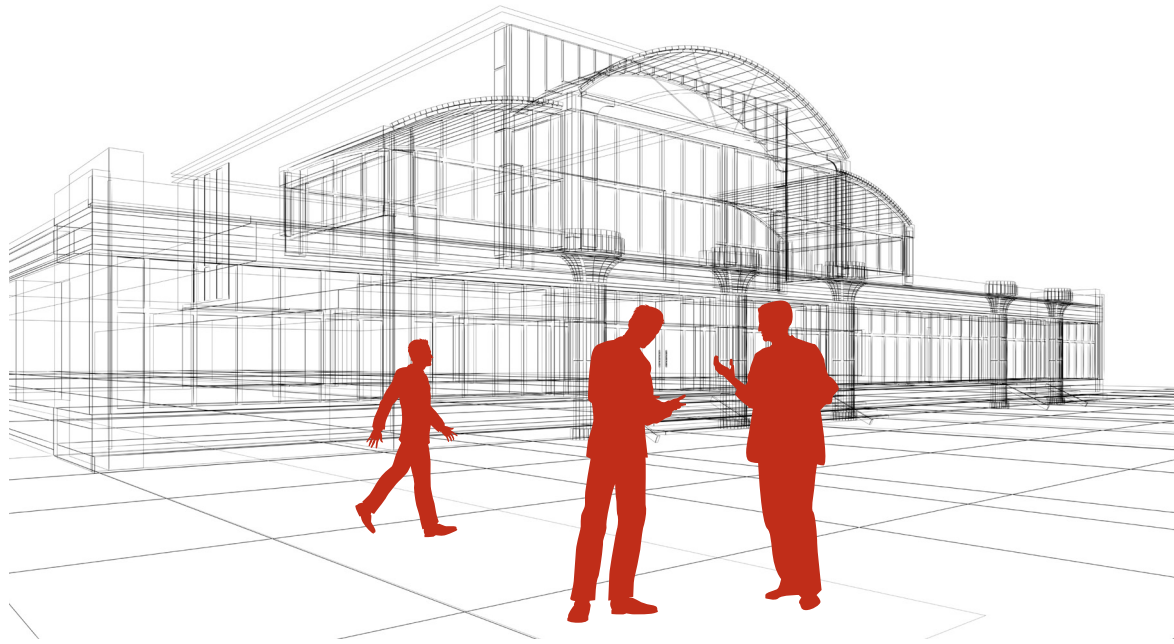


BUILDING TOMORROW TOGETHER

R-CONTROL SIPs





COMMERCIAL

From design concept to construction to occupancy . . .
R-Control SIPs go up fast and provide quick
occupancy while also providing ongoing durability
and energy savings.



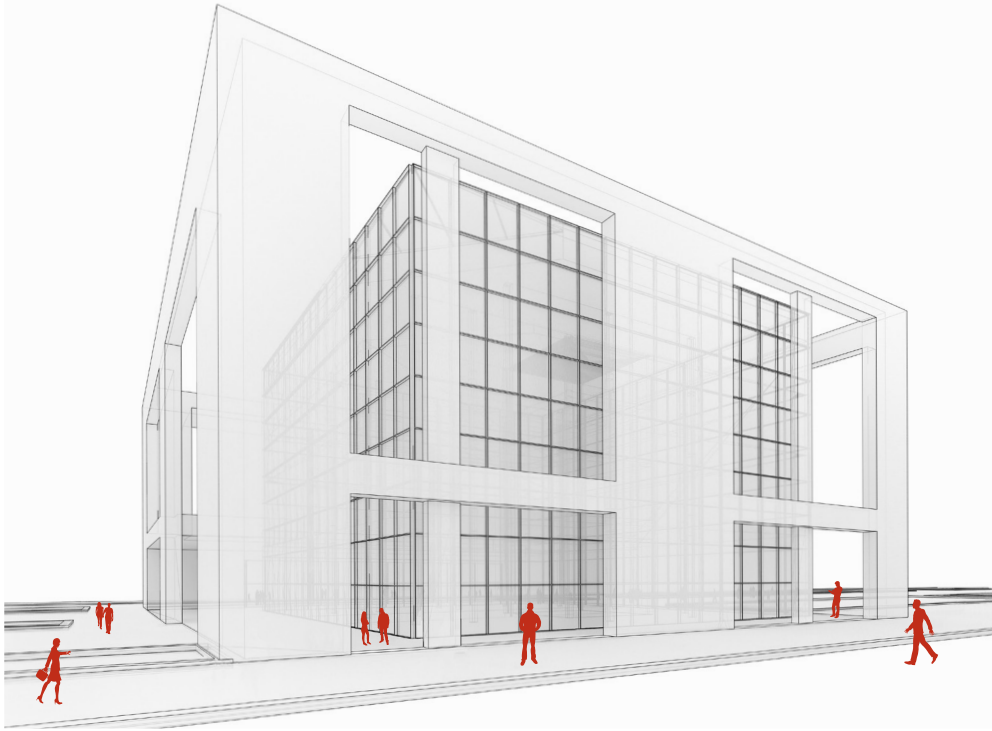
LODGING



RETAIL



GOVERNMENT



COMMUNITY

From design concept to construction to completion . . .
R-Control SIPs go up fast and provide attractive,
durable, and energy efficient community spaces.



INSTITUTIONAL



PUBLIC



SCHOOLS



RESIDENTIAL

From design concept to construction to residency . . .
R-Control SIPs can be used for any type of residential structure and provide ongoing comfort, durability, and energy savings.



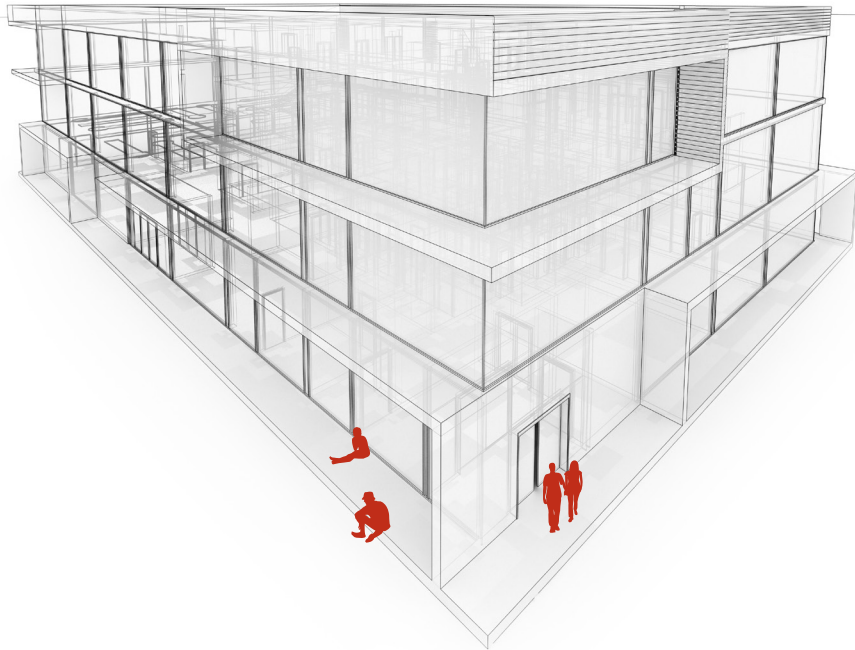
CUSTOM



MULTI-FAMILY



RETREATS



SPECIALTY

From imagination to design concept to reality . . .
R-Control SIPs with their maximum performance
benefits can be used for any type of structure.



NEXT GENERATION / NET-ZERO



ENERGY RATED



PARKS

MORE THAN A SIP—A COMPLETE SYSTEM.

When you choose R-Control SIPs, you're collaborating with a team of experts who work with you every step of the way. We're here to answer your questions, solve your problems, and do everything we can to make sure your project proceeds smoothly—and ends successfully.

R-Control SIPs are manufactured by a network of manufacturers located throughout North America and the world.

This network allows us to offer architects, designers and builders the best of both worlds: the resources of the country's largest provider of SIPs, and the superior attention and customer service of a local supplier.

CONTACT US



BIG SKY INSULATIONS, INC
15 Arden Drive | P.O. Box 838
Belgrade, MT 59714

(406) 388-4146 | (800) 766-3626 | Fax (406) 388-7223

Email: answers@bigskyrcontrol.com

Website: www.BigSkyRControl.com



R-Control SIPs are made exclusively by AFM Corporation licensees.

Copyright ©2013 AFM Corporation.
All rights reserved. Printed in USA.
R-Control is a registered trademark of AFM Corporation, Lakeville, MN.

RC39-07/16

